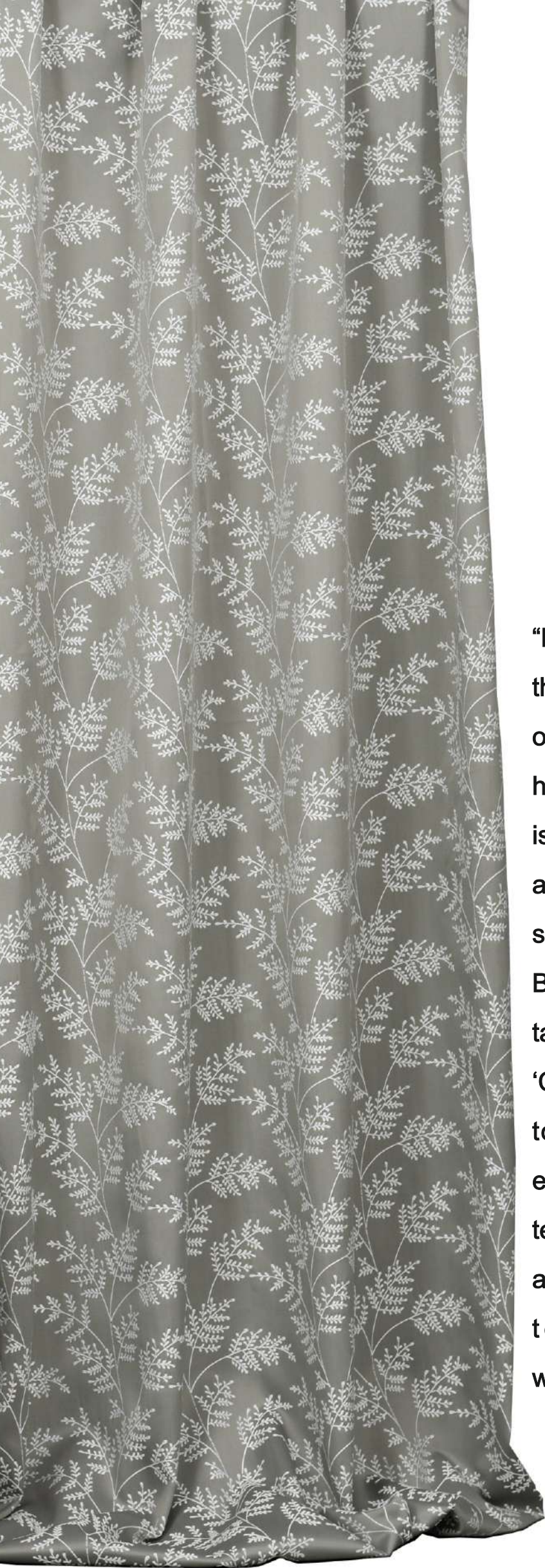


*Creation*  
the furnishing world ...

CARTIER

CURTAIN / CUSHIONS



“Established in 2012, 'Creation' epitomizes the pinnacle of sophistication in the realm of sofa and curtain fabric. Nestled in the heart of South India, our esteemed brand is synonymous with unparalleled luxury and exquisite craftsmanship. With offices strategically located in Hyderabad and Bangalore, we cater to the discerning tastes of clients across the region. At 'Creation,' we transcend mere functionality to deliver an unparalleled sensory experience, where every touch, every texture, whispers of timeless elegance and uncompromising quality. Welcome to the epitome of refinement welcome to 'Creation.'”

CARTIER

*Creation*  
the furnishing world ...



CARTIER



SR. NO.: 7301



SR. NO.: 7302



SR. NO.: 7303



SR. NO.: 7304



SR. NO.: 7305



SR. NO.: 7306



SR. NO.: 7308



CARTIER



SR. NO.: 7301



SR. NO.: 7302



SR. NO.: 7303



SR. NO.: 7304



SR. NO.: 7305



SR. NO.: 7306



SR. NO.: 7307



SR. NO.: 7308



SR. NO.: 7309



SR. NO.: 7310



SR. NO.: 7311



SR. NO.: 7312



SR. NO.: 7313



SR. NO.: 7314



CARTIER



SR. NO.: 7308



SR. NO.: 7309



SR. NO.: 7310



SR. NO.: 7311



SR. NO.: 7312



SR. NO.: 7313



SR. NO.: 7314



SR. NO.: 7315



SR. NO.: 7316



SR. NO.: 7317



SR. NO.: 7318



SR. NO.: 7319



SR. NO.: 7320



SR. NO.: 7321



CARTIER



SR. NO.: 7315



SR. NO.: 7316



SR. NO.: 7317



SR. NO.: 7318



SR. NO.: 7319



SR. NO.: 7320



SR. NO.: 7321



CARTIER

*Creation*  
the furnishing world ...



SR. NO.: 7322



SR. NO.: 7323



SR. NO.: 7324



SR. NO.: 7325



SR. NO.: 7326



SR. NO.: 7327



SR. NO.: 7328



CARTIER



SR. NO.: 7322



SR. NO.: 7323



SR. NO.: 7324



SR. NO.: 7325



SR. NO.: 7326



SR. NO.: 7327



SR. NO.: 7328



SR. NO.: 7329



SR. NO.: 7330



SR. NO.: 7331



SR. NO.: 7332



SR. NO.: 7333



SR. NO.: 7334



SR. NO.: 7335



CARTIER



SR. NO.: 7329



SR. NO.: 7330



SR. NO.: 7331



SR. NO.: 7332



SR. NO.: 7333



SR. NO.: 7334



SR. NO.: 7335



SR. NO.: 7336



SR. NO.: 7337



SR. NO.: 7338



SR. NO.: 7339



SR. NO.: 7340



SR. NO.: 7341



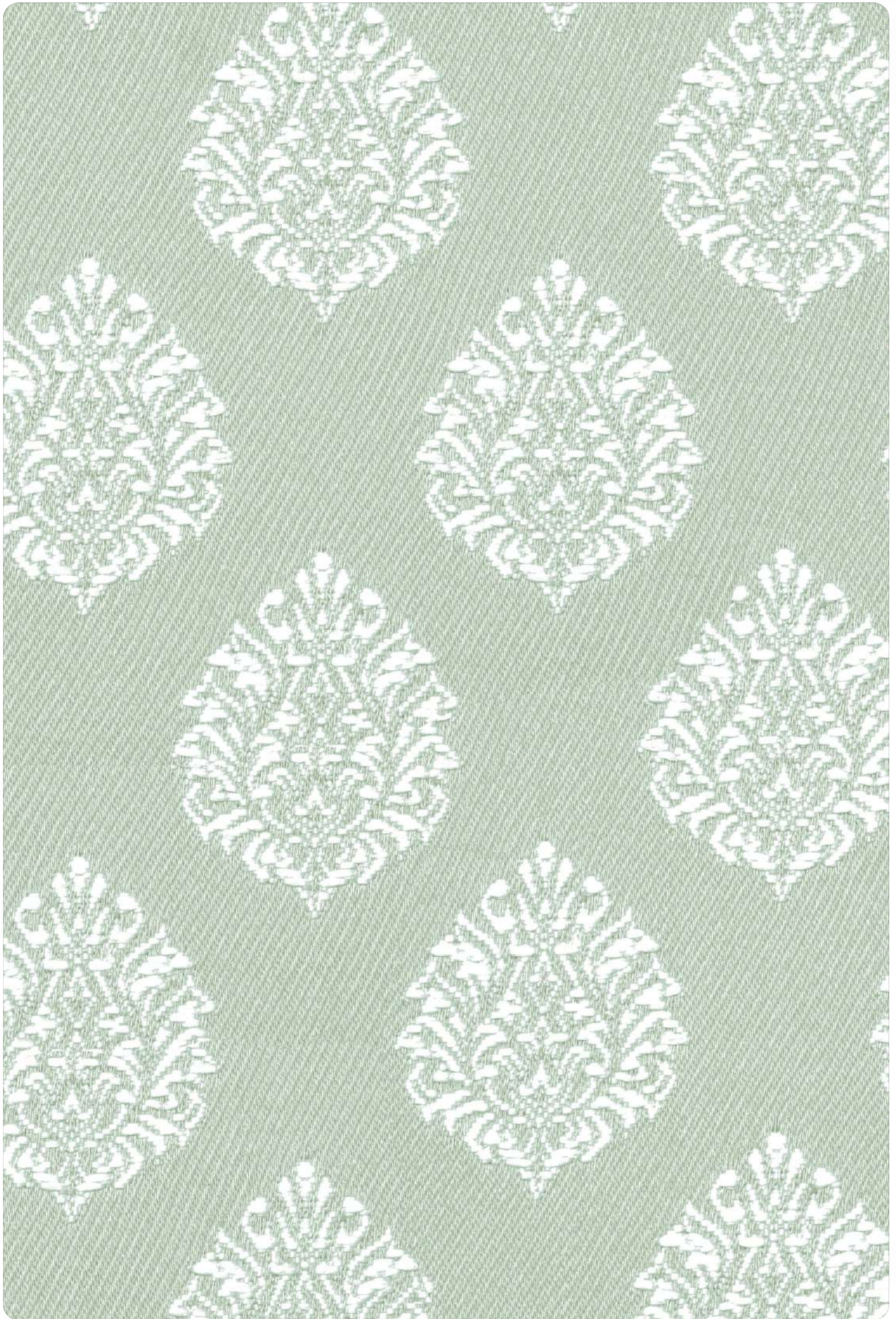
SR. NO.: 7342



CARTIER



SR. NO.: 7336



SR. NO.: 7337



SR. NO.: 7338



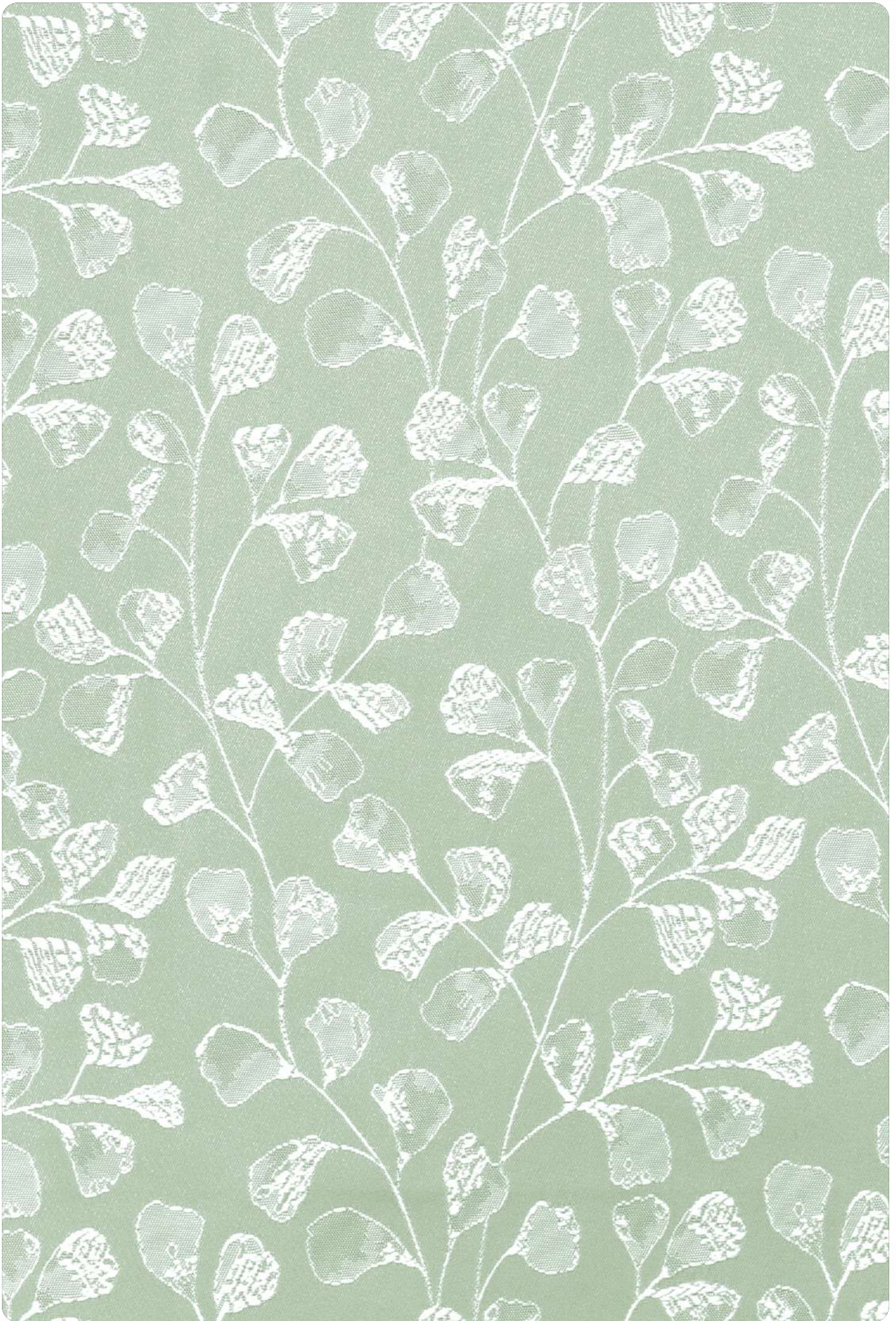
SR. NO.: 7339



SR. NO.: 7340



SR. NO.: 7341



SR. NO.: 7342

CARTIER





SR. NO.: 7343



SR. NO.: 7344



SR. NO.: 7345



SR. NO.: 7346



SR. NO.: 7347



SR. NO.: 7348



SR. NO.: 7349



CARTIER



SR. NO.: 7343



SR. NO.: 7344



SR. NO.: 7345



SR. NO.: 7346



SR. NO.: 7347



SR. NO.: 7348



SR. NO.: 7349



SR. NO.: 7350



SR. NO.: 7351



SR. NO.: 7352



SR. NO.: 7353



SR. NO.: 7354



SR. NO.: 7355



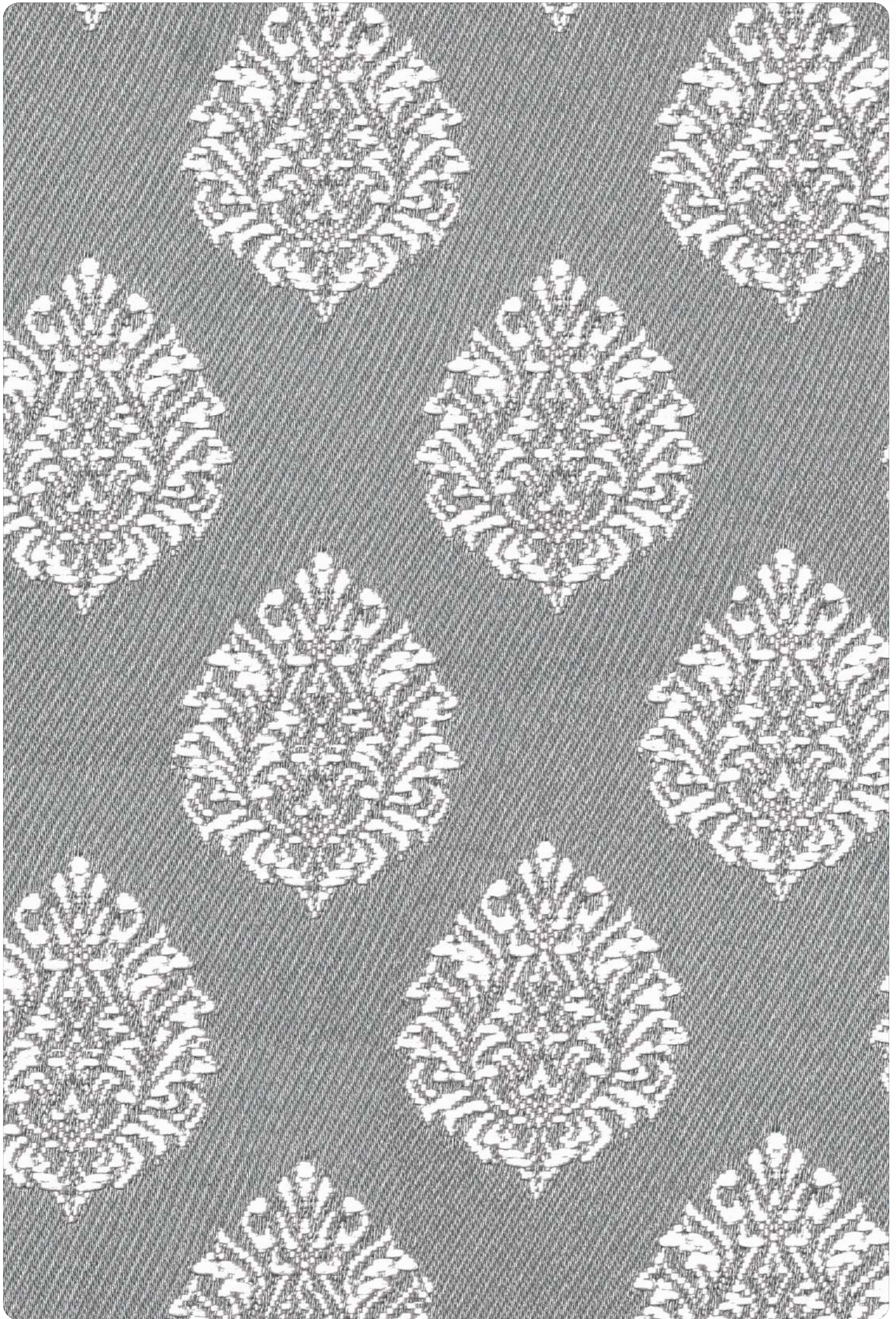
SR. NO.: 7356



CARTIER



SR. NO.: 7350



SR. NO.: 7351



SR. NO.: 7352



SR. NO.: 7353



SR. NO.: 7354



SR. NO.: 7355



SR. NO.: 7356



SR. NO.: 7357



SR. NO.: 7358



SR. NO.: 7359



SR. NO.: 7360



SR. NO.: 7361



SR. NO.: 7362



SR. NO.: 7363



CARTIER



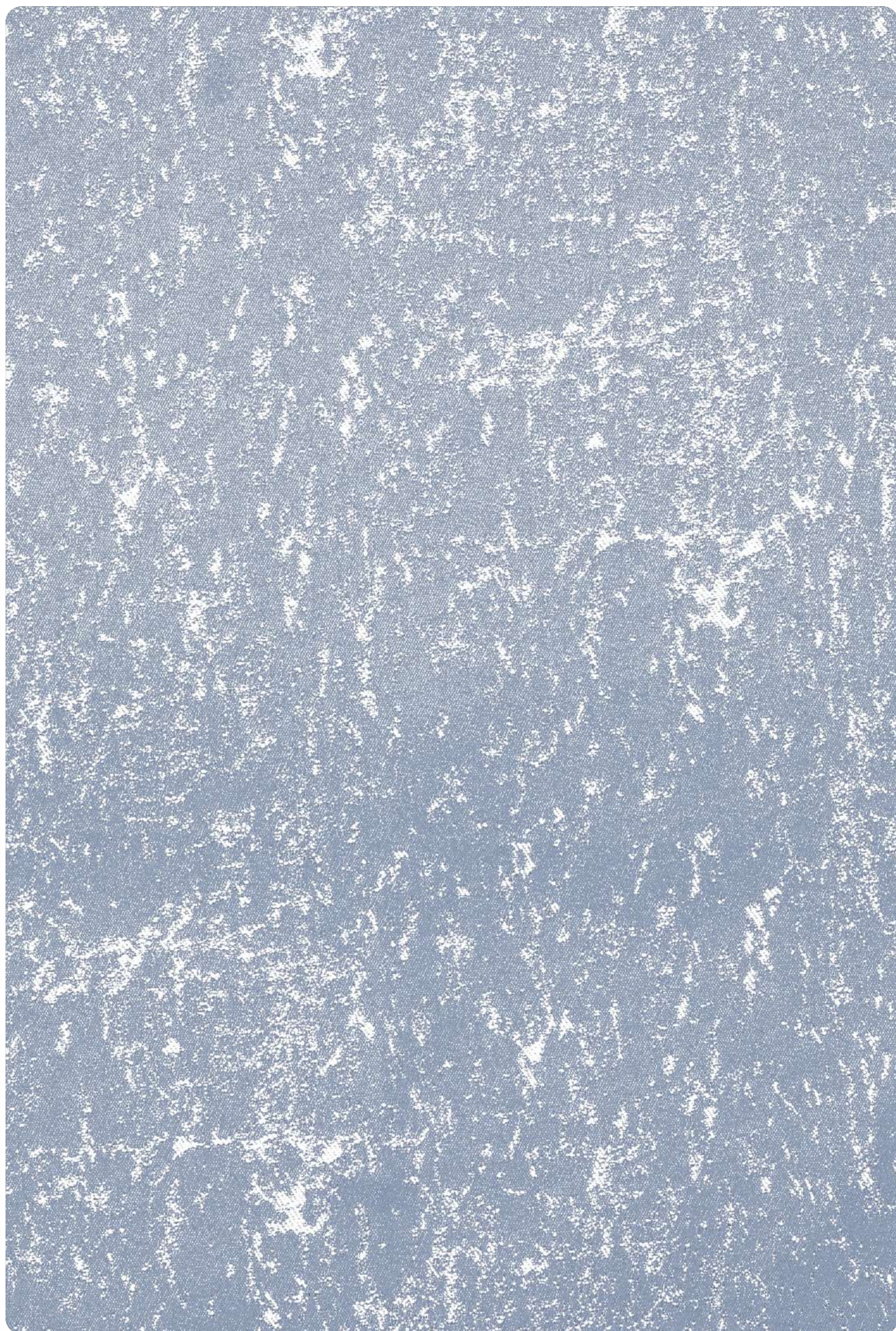
SR. NO.: 7357



SR. NO.: 7358



SR. NO.: 7359



SR. NO.: 7360



SR. NO.: 7361



SR. NO.: 7362



SR. NO.: 7363



SR. NO.: 7364



SR. NO.: 7365



SR. NO.: 7366



SR. NO.: 7367



SR. NO.: 7368



SR. NO.: 7369



SR. NO.: 7370



CARTIER



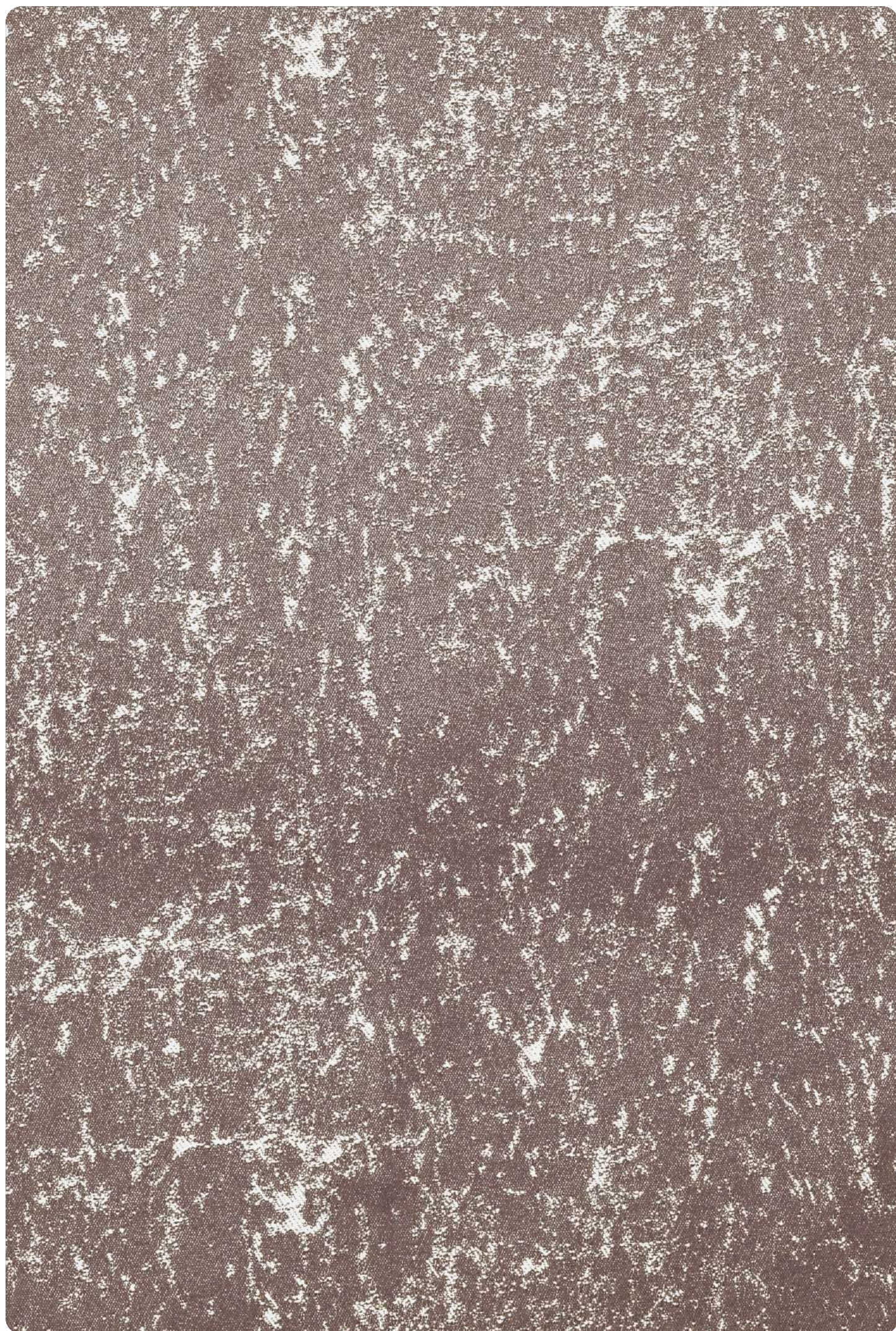
SR. NO.: 7364



SR. NO.: 7365



SR. NO.: 7366



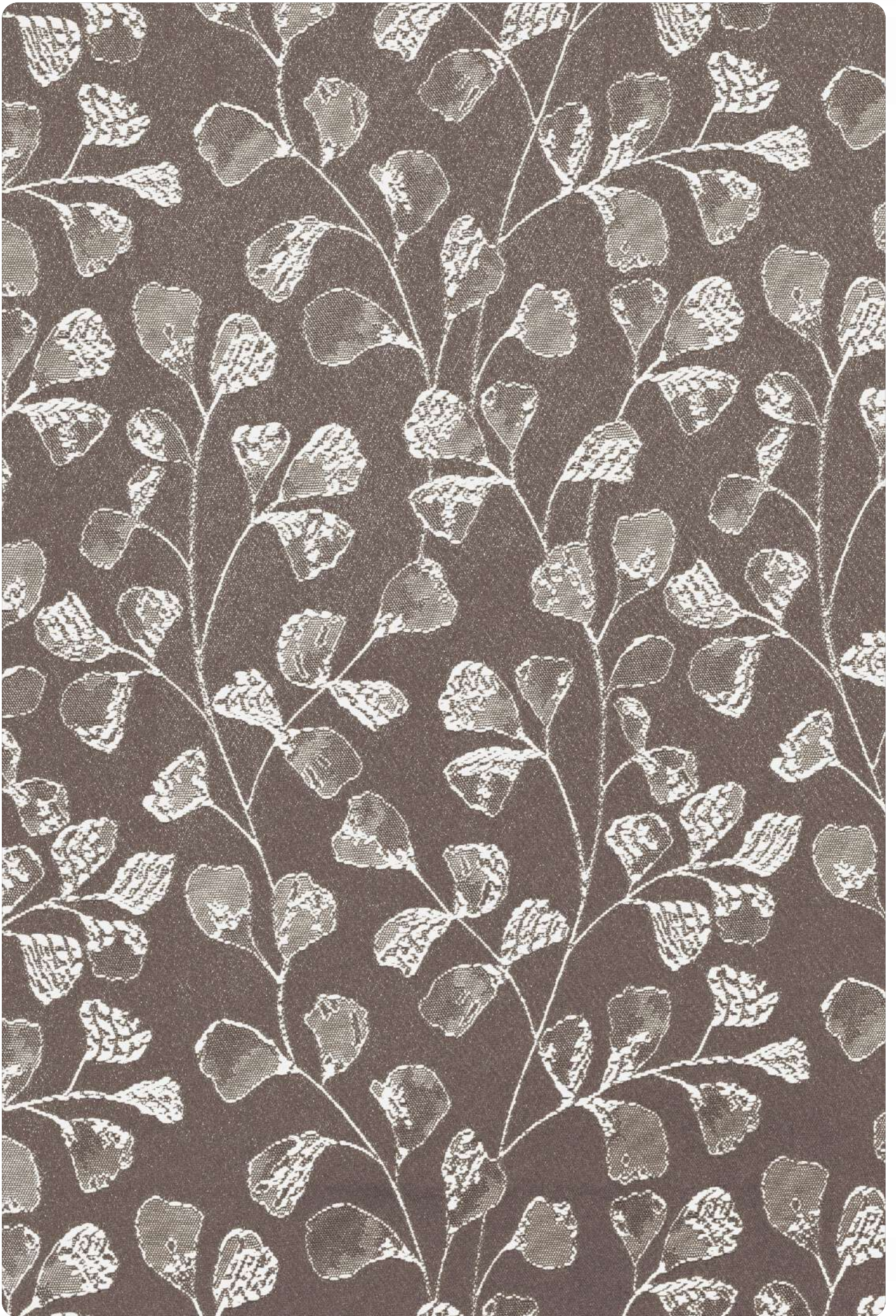
SR. NO.: 7367



SR. NO.: 7368



SR. NO.: 7369



SR. NO.: 7370



# CARTIER

SR. NO.	WIDTH	COMPOSITION	END-USE
7301,7303,7304,7306,7307 (Main Fabric)	48"/122CM	100%POLYESTER	
7302,7305(Sheer Fabric)	48"/122CM	100%POLYESTER	

1. We do not accept responsibility for any damage resulting from inappropriate use, chemical cleaning or additional impregnation.
2. Test results were gathered from various samples and therefore represent average indicative values.
3. Discolouration caused by clothing fabrics such as jeans does not represent a material defect. Minor colour deviations and discolouring in context of permissible industrial tolerance standards do not constitute reasons for claims .

### Washing Instructions



Color shades may slight vary from dye lot to dye lot.